

READY-TO-WEAR
AUTUMN-WINTER 20/21

**AGENT
VENDETTA**

AZZI & OSTA

THE NAME IS VENDETTA. AGENT VENDETTA.

Azzi & Osta's AW20/21 heroine is a double agent who embodies the spirit of female tenacity. Fearless, sharp and mysterious, the collection is inspired by the duality of a female spy and her ability to be at once both seductive and dangerous. Quick-witted and resourceful she has a depth of personality that is loaded with an element of surprise. Alluring but with the edge of a femme-fatale, she is a glamorous secret-agent unafraid of taking risks.

A collection of contrasting textures and volumes is built on the nuances of her character to dramatic effect. More structured and constrained silhouettes crafted from manipulated fabrics are set against soft, fluid silks and cloud-like tulle in styles that are entwined with the high-craft of haute-couture for which the brand is known. The heroine is razor-sharp and refined in velvet and double satin duchesse but emboldened by twisted volume taking the form of abstract flames. Cool and collected, she stands tall as she emerges from the action, mistress of her own destiny.

Decadent ballgowns, slim-line cocktail dresses and nipped-in corsets worn with straight pants are all interwoven with common signatures - open backs, velvet and playful, asymmetrical volume. Multiple options for Azzi & Osta's assured but elusive woman, whatever the day's mission may be. Use of metallic accents, sequins and mirrored detailing are nostalgic of 60s psychedelia and the golden-age of the Bond girl. A colour palette of rich jewel tones - deep teal, dusk lilac, scarlet red and twilight blue - enhance the choice of fabrics - velvet, crepe, mikado, gabardine.

The drama is brought to life through custom-made fireworks, emblazoned through intricate embroidery applied to tulle gowns and structured dresses. Straight-cut skirts are given thigh-high splits and balanced with asymmetrical ruffles and exaggerated shoulders. The trench coat, so emblematic of the world of espionage, is reimagined in embroidered tulle or with a lace-panelled back. The classic tuxedo is glistening in paillettes while capes in silk crepe de chine add to the air of mystery. Elaborate details to the back ensure that this agent's exit will be as memorable as her entry, with oversized bows, fishtail skirts and exquisite beading taking centre stage. A woman quite content with making her own fireworks.

01





02

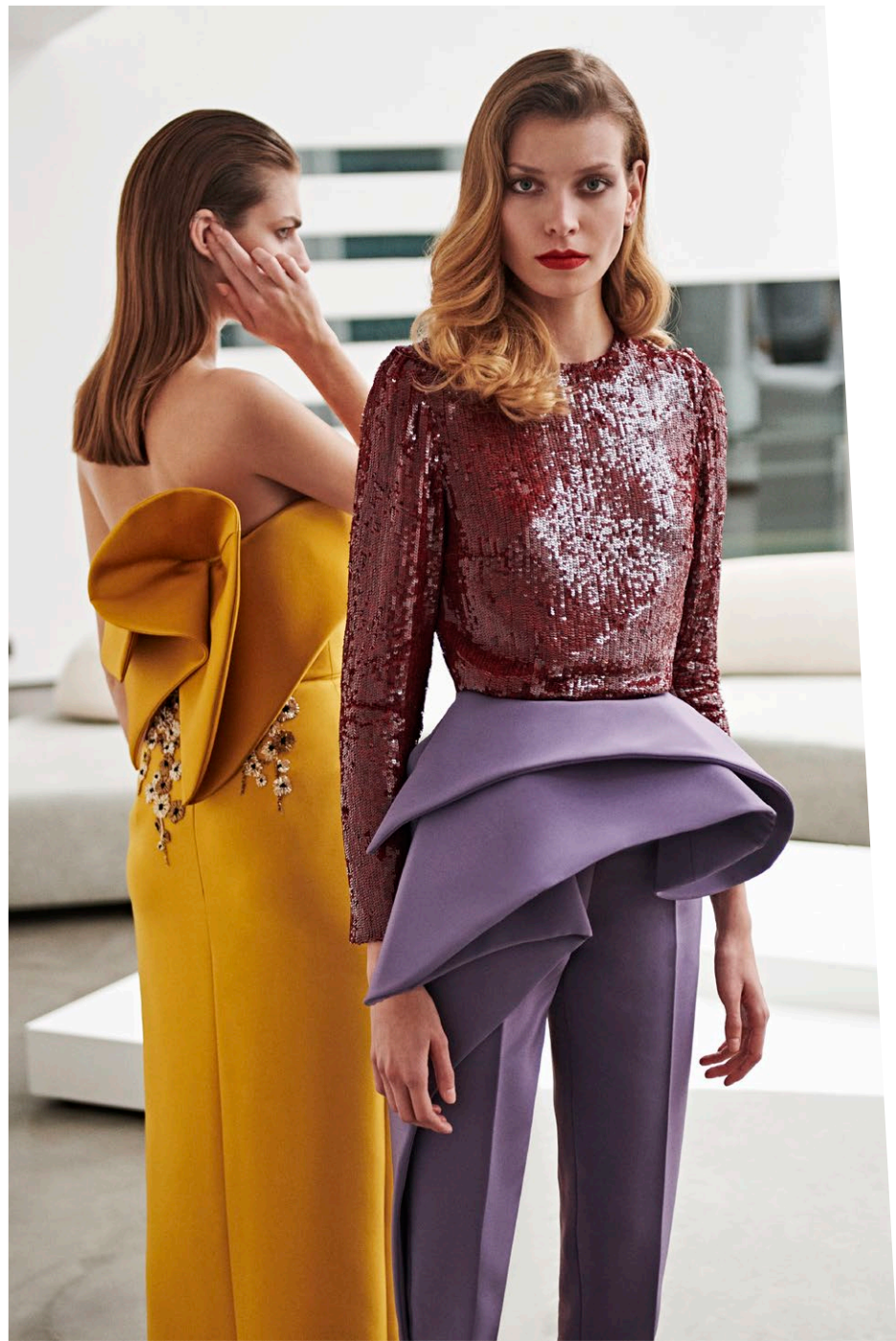




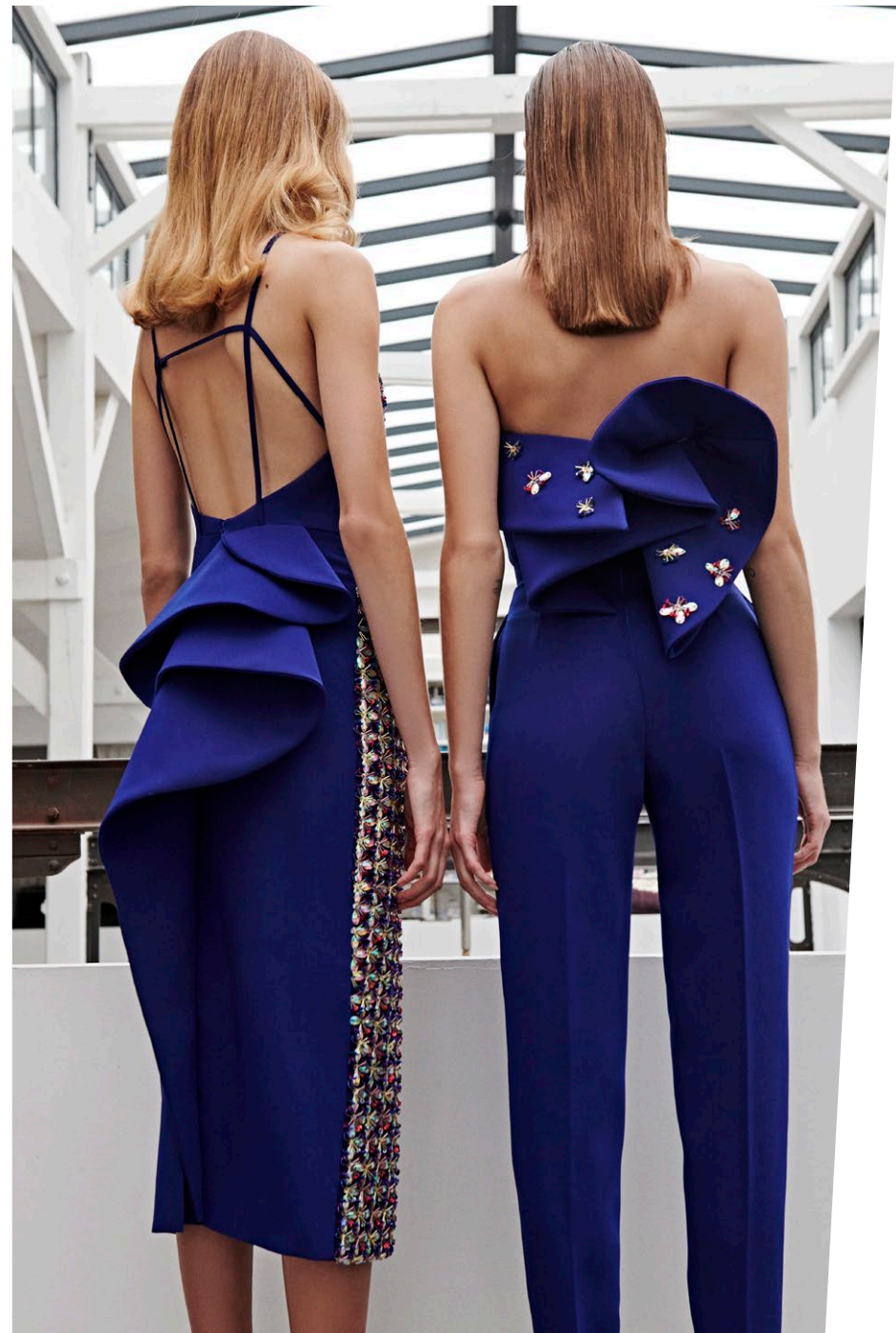
03

04





06





07th



08





10





12





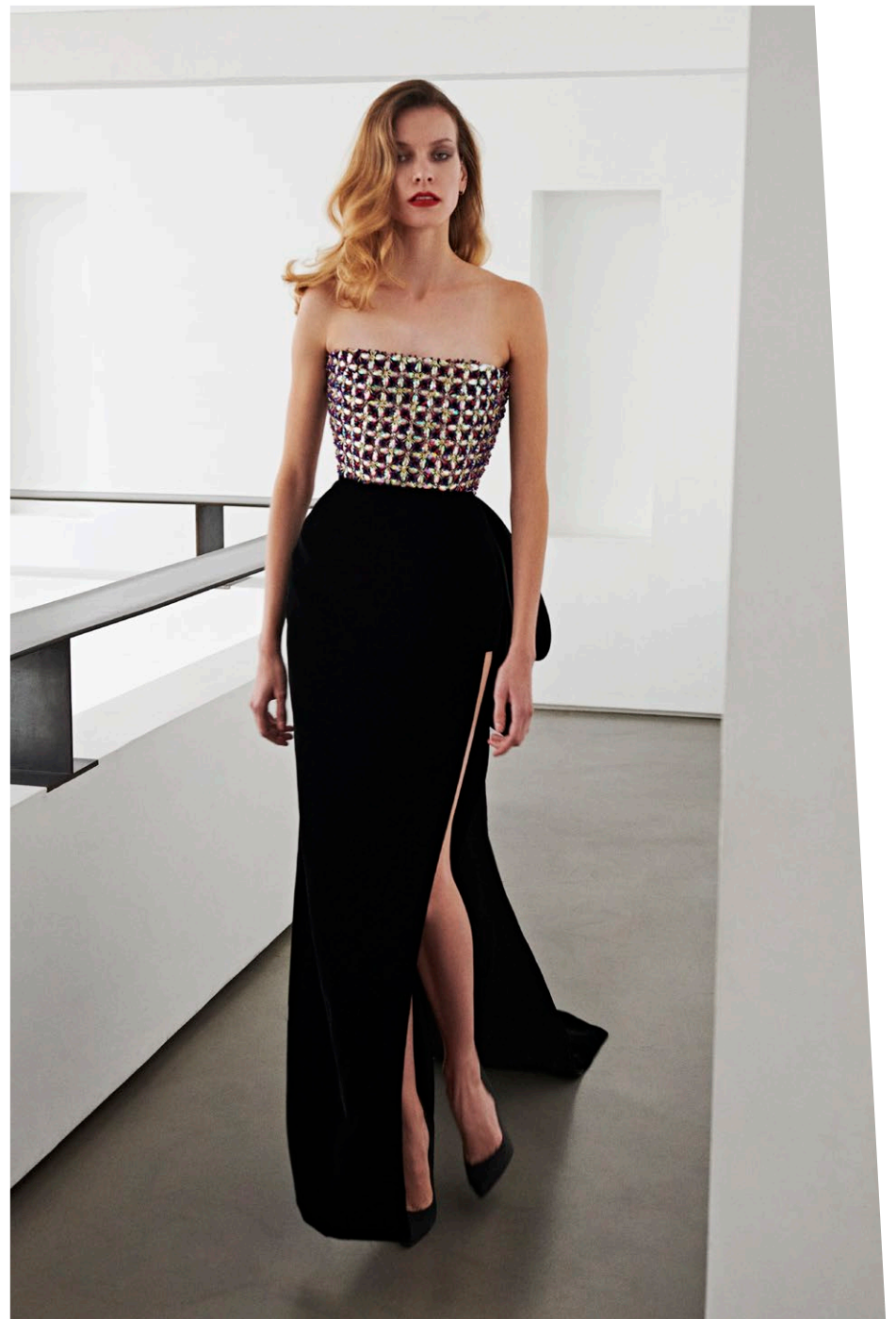


13



14









17^o



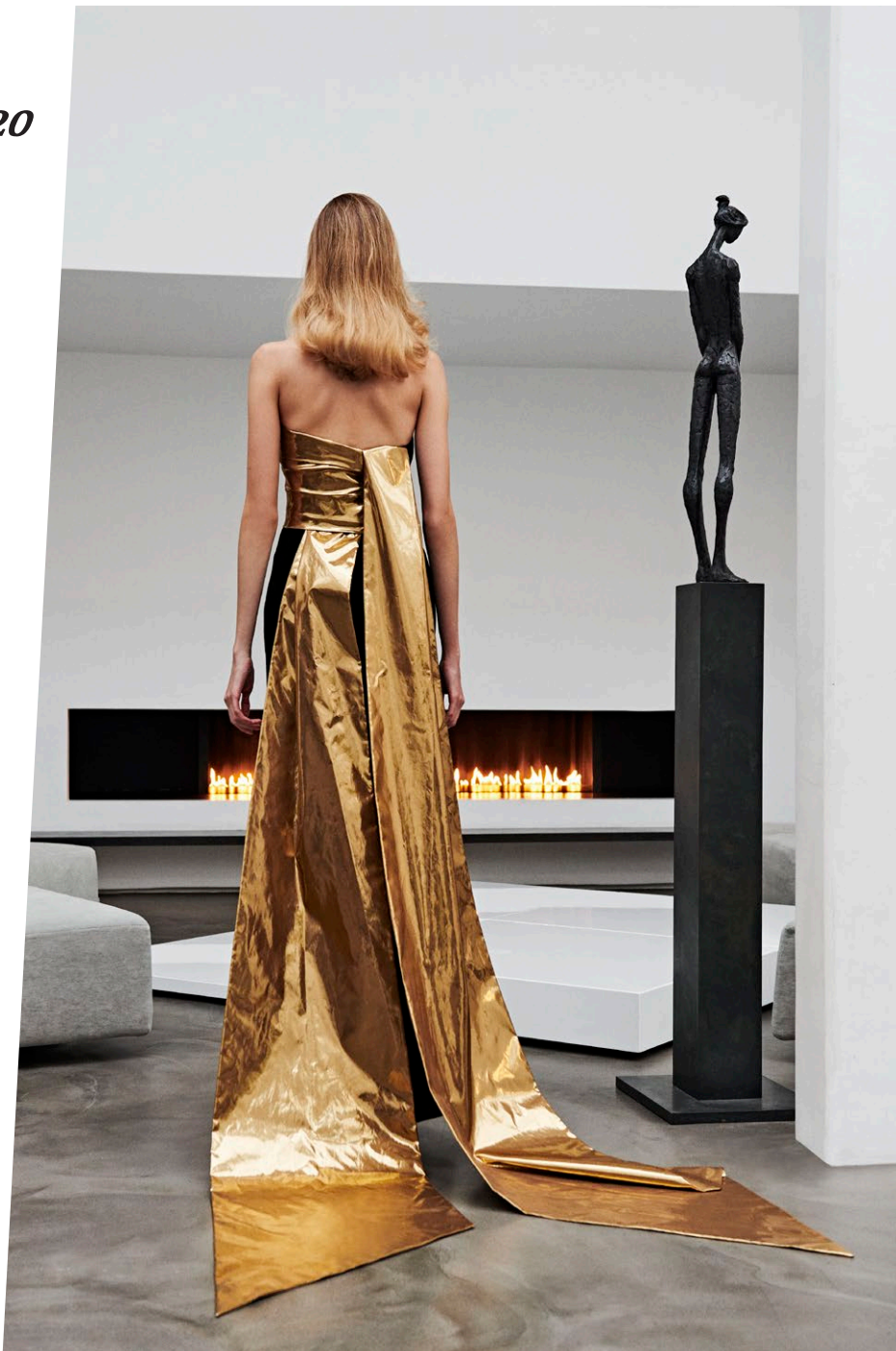






19





21

